

Malcolm Grey, LLC

MG Lab Service 3701 E. University Drive · Suite 300 · Phoenix · AZ 85034
602-431-4781 office · 480-797-3353 cell · david@mglabservice.com · www.mglabservice.com

Test Report

RPT No. 081010.001

Date: 8 October 2010

Page 1 of 2

Customer:

Silver Streak Ind.
1604 S. Edward Drive
Tempe, AZ 85281
(480) 894-9528

Sample: Howlite
Country of Origin: unknown
Sample Quantity: Two (2) stones, one tested
Sample Received: 5 October 2010
Testing Period: 7 October 2010

Test Requested: Method CPSC-CH-E1001-08 for US 16 CFR 1303, lead accessible substrate, for US Public Law 110-31; Digest method: ASTM-1645.01

Test Result:

Test Item	Howlite	Permissible Limit
Lead (Pb)	10 ppm	0.03% (300 ppm)
Comment	PASS	

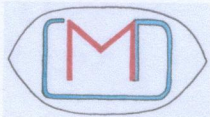
Scope of Requirements:

Lead (Pb) limits in the US:
(1) ≤ 300 ppm after 14 Aug. 2009
(2) ≤ 100 ppm after 14 Aug. 2011.

Notes:

Method detection limit given dilution factors etc. = 0.002%
Check on 0.10 ppm Pb within 8-9% of value.
ND = not detected
% = Wt percent
100 ppm = 0.010%

David K. Luttrull, Ph.D.
Chief Scientist



Malcolm Grey, LLC

MG Lab Service 3701 E. University Drive · Suite 300 · Phoenix · AZ 85034
602-431-4781 office · 480-797-3353 cell · david@mglabservice.com · www.mglabservice.com

Test Report

RPT No. 081010.001

Date: 8 October 2010

Page 2 of 2

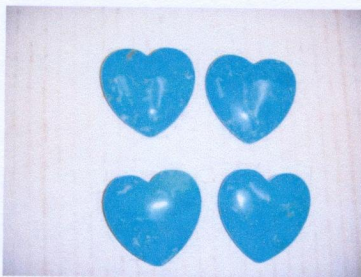
Instrument:

Perkin Elmer 2100 DV ICP-OES

Disclaimer:

The sample tested was a unique sample. MG Lab Service does not certify the "lot" from which this sample came, only this particular sample.

Sample Photo:



Howlite

End of Report –